



Sunshine Coast Council Coastal Management Overview

Michael Anderson

Our coast – valued, healthy, enjoyed

- Region's coastline is an impressive combination of natural beaches, dune and tidal ecosystems
- 130 km coastline adds value to our environment, our lifestyle and our economy
- Beach-related tourism contributed \$270m in 2013
- Benefits to environment and way of life are immeasurable
- Council employs a range of proactive coastal planning, management and maintenance activities to ensure protection and retention of coastal assets



Management Activities

- Understanding how our coastline works
- Ensuring we have a strategic approach to coastal management
- Investing heavily in programs, partnerships and projects that maintain and enhance our coastal environment
- Future planning for coastal hazards
- Continual improvement of our coastal knowledge in partnership with key stakeholders



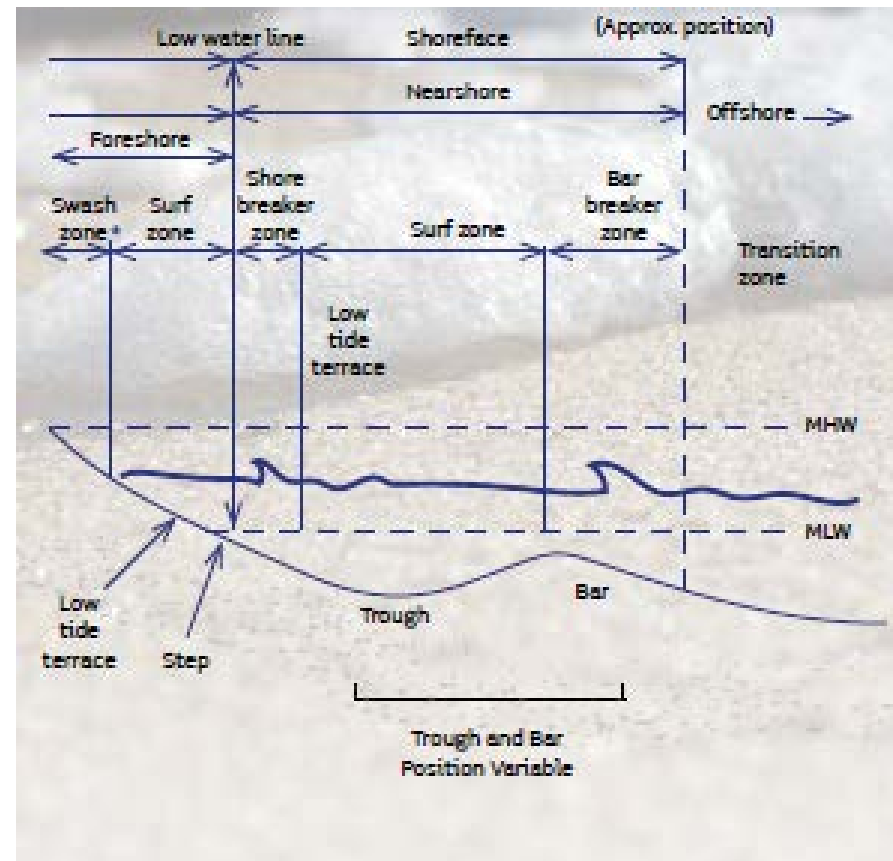
Challenges

- Avoid or minimise interference with natural coastal processes
- Sustain the economic value of the beaches and coastal parks
- Preserve/ enhance the natural values of coastal public lands
- Implement SEMP* as required
- Be responsive to new info on coastal hazards and adopt adaptive management practices
- Recognise the importance of cultural heritage
- Engage with the community on coastal management
- Ensure the investment is cost effective



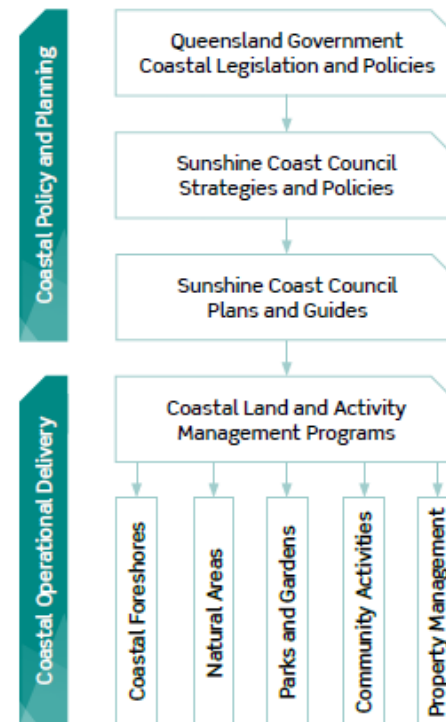
Understanding how our coastline works

- Coastline constantly changing
- Beaches eroding and building in response to natural processes (winds, waves, currents & tides)
- These processes maintain sand balance between beaches, dunes, and near shore sand bars
- Coastal sand transport north by long shore drift due to dominant SE trade winds
- Storm events (east coast lows, cyclones) result in short term sand shift (beaches – nearshore)
- Sand returns to beaches under calmer conditions where it can be blown to contribute to dunes/ stabilised by vegetation



Strategic approach to coastal management

- State Coastal Legislation and Policies
- SCC Corporate Plan 2017 – 2021
- Sunshine Coast Waterways and Coastal Management Strategy
- Coastal Hazard Adaptation Strategy (CHAS) in development
- Coastal Management Policy (Public Lands)
- Shoreline Erosion Management Plan (2014)
- Coastal Land and Activity Management Programs



Overview of council's coastal policy framework

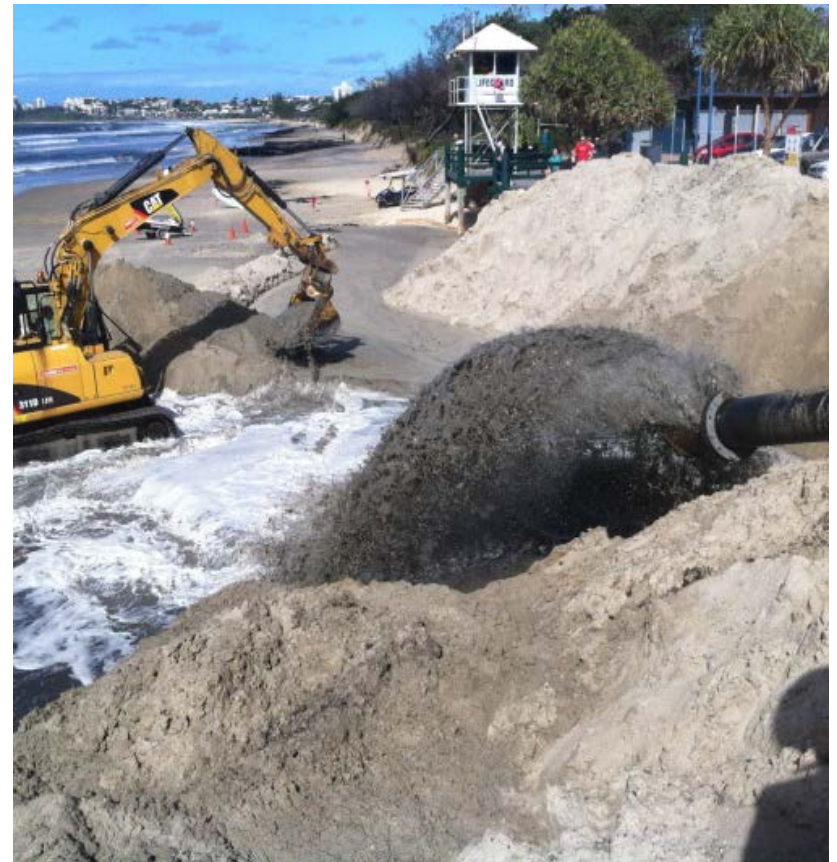
Investing in programs, partnerships and projects that maintain and enhance our coastal environment

- Bushland conservation and habitat
- Recreation parks, trails and facilities
- Beaches, foreshores, coastal infrastructure and canals
- Lifeguards
- Catchment management
- Local amenity and local laws
- Public health
- Tourism



Planning for coastal hazards

- Coastal hazards and climate change are important considerations for future planning
- Hazards such as erosion and inundation (storm tide/ sea level rise)
- Extreme weather events likely from climate change/ increase severity of storm surge/ erosion
- Natural beaches and dunes cope well
- Management focus on more developed sites
- Planning scheme considers long term impacts
- Coastal hazard adaptation



Continual improvement of our coastal knowledge on partnership with key stakeholders

- Continual improvement based on new information and research data
- Council's coastal policies and plans incorporates adaptive management principles
- Requirement for ongoing investment
- Growing strong partnerships (communities, industry & government)
- Activities include:
 - sand sourcing study
 - ongoing monitoring
 - hazard adaptation planning
 - coastal land management planning
 - learning from others
 - investigating and research
 - exploring efficiencies



Summary

- Recognise the value and importance of our coastal areas
- Understand the challenges presented
- Continue to understand our coastal processes
- Strategic approach to coastal management
- Invest in programs, partnerships and projects
- Planning for coastal hazards
- Build our knowledge/ continual improvement





Thank you