

## Coastal Forum: Specks of sand

# New approaches to coastal monitoring: A brief overview using Maroochydore Beach as a case study

Javier Leon, PhD  
Lecturer in Physical Geography



Centre for Coastal Management



Rummell, A (2016)  
Unpublished Honours thesis



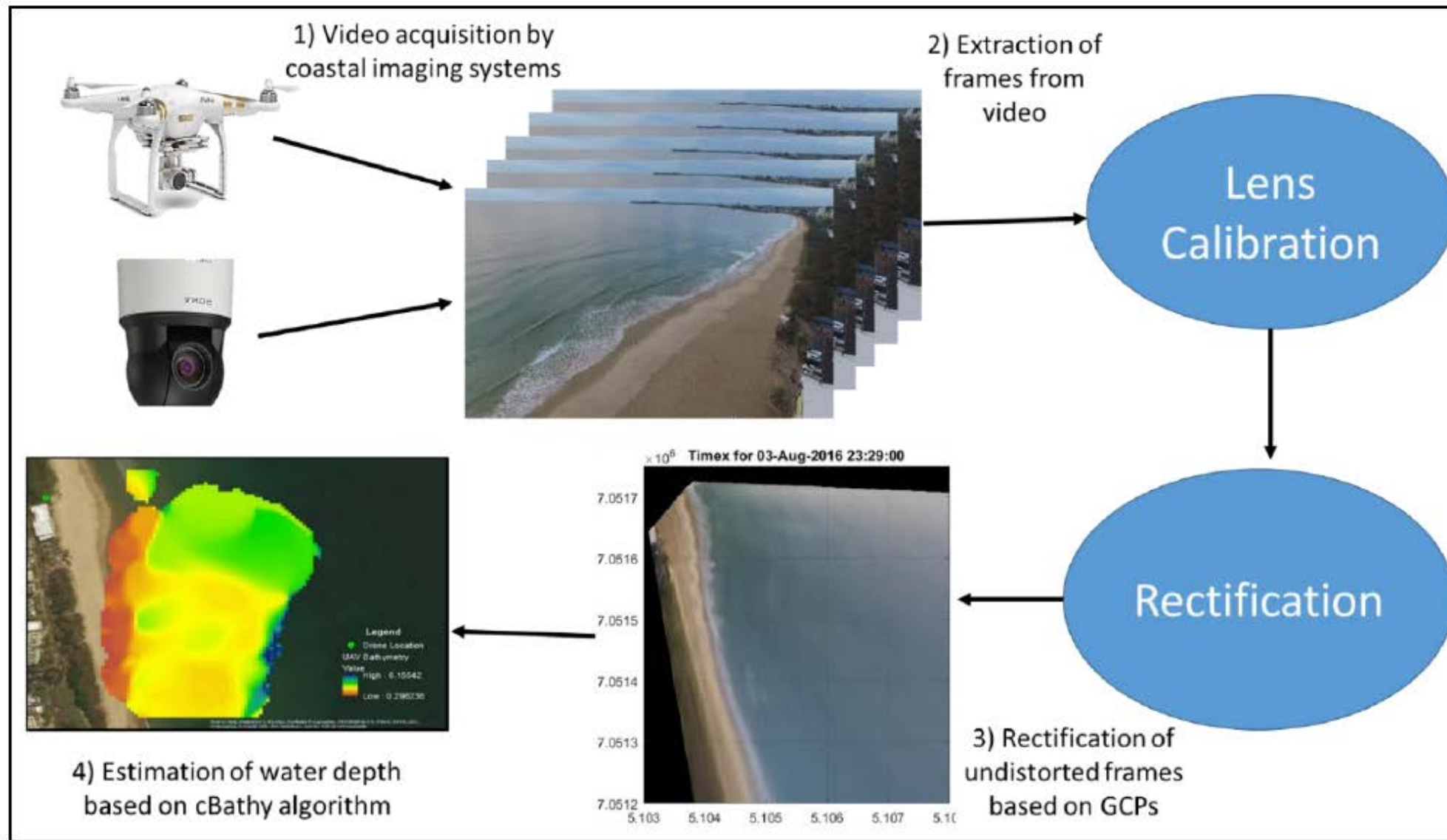




$$\sigma^2 =$$

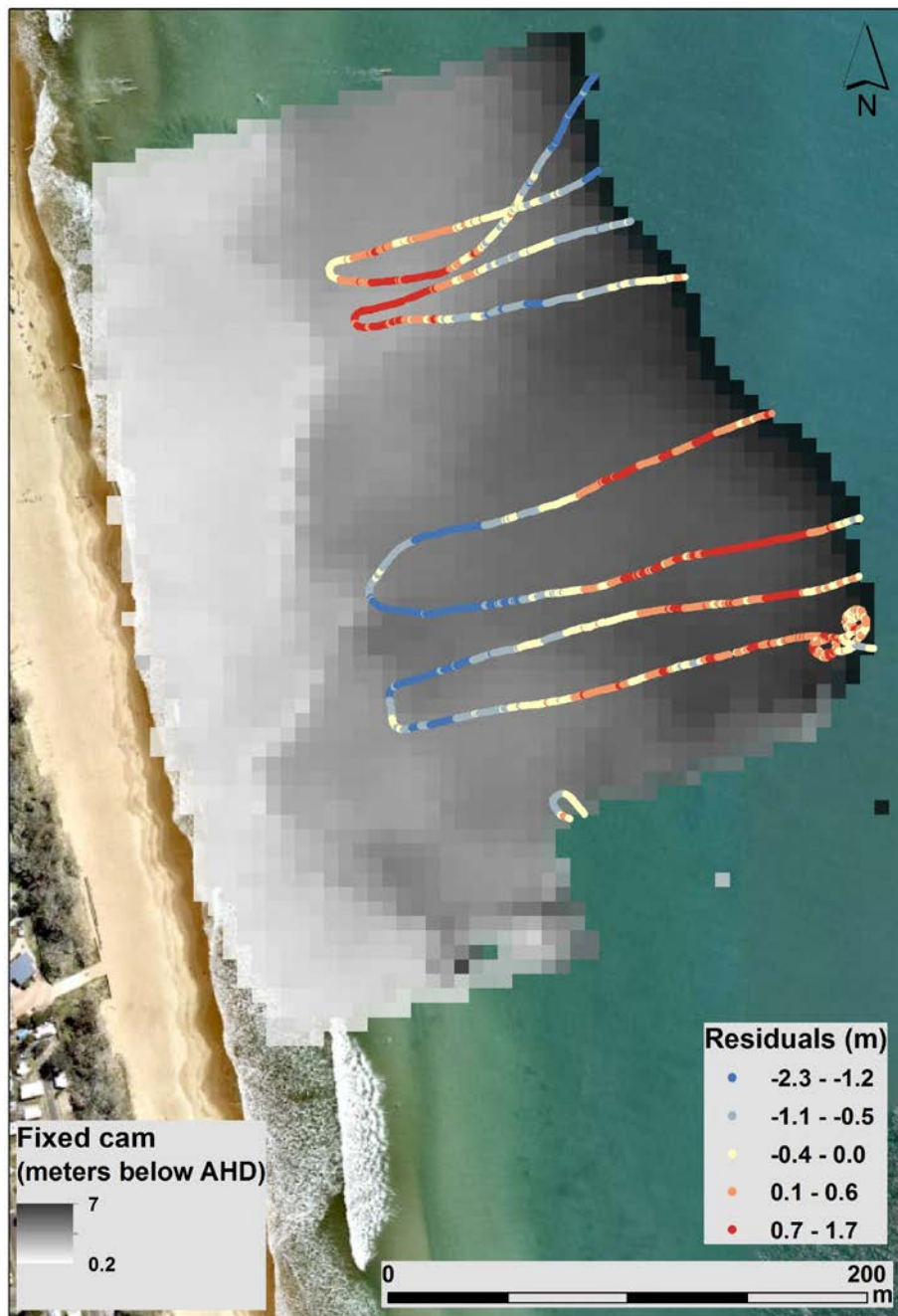
*Disp*  
relations  
(wave le



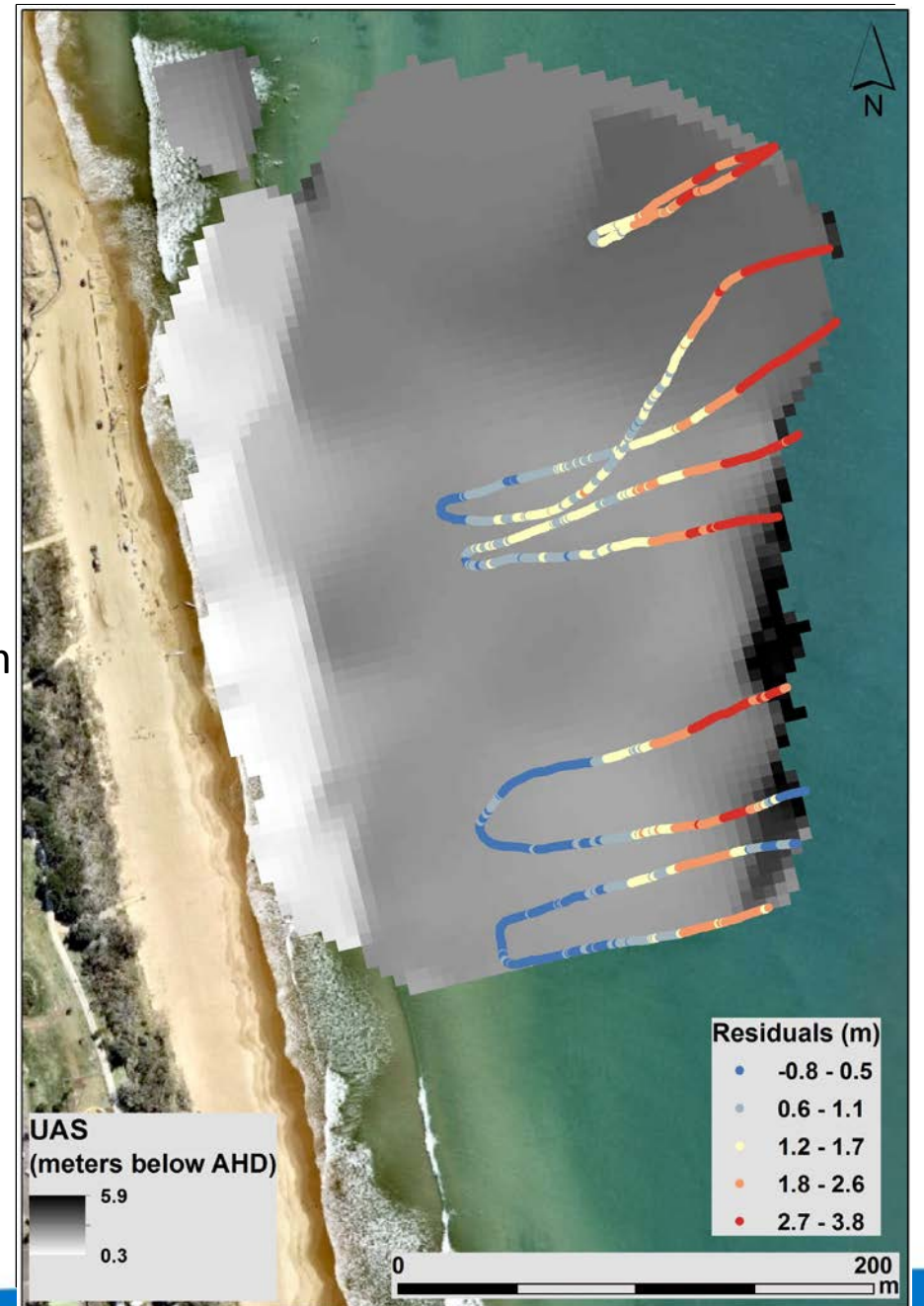


Holman et al. 2013)

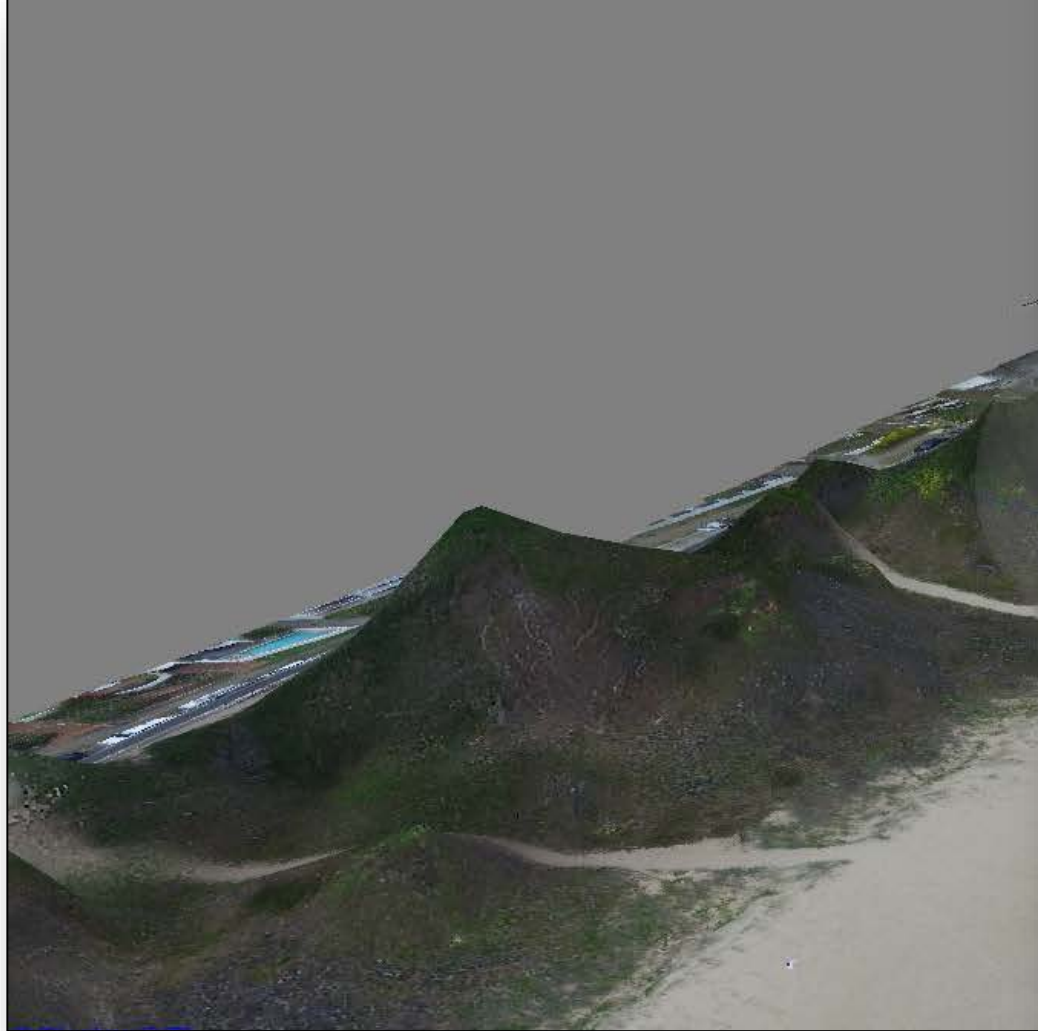




Average error...  
Fixed-cam: 0.8 m  
Drone: 1.8 m









12/07/2016



11/08/2016



08/09/2016



07/10/2016



